

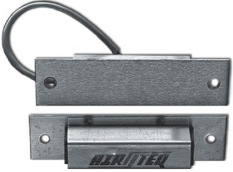
DPS 6100

Stainless steel, mortise-mount mechanical, high security door position switch for door frame installation. Used in access-sensitive areas.



DPS 6150

Stainless steel, surface-mount mechanical, high security door position switch for door frame installation. Used in access-sensitive areas.



DPS 6200

Stainless steel, mortise-mount, four-reed, high security door position switch for door frame installation. Used in access-sensitive areas.

- Surface mounted kit available



DOOR STOP 650

This door stop is designed for use with door hardware with up to a 2 1/4" projection. The 2" diameter, black silicone rubber bumper is mounted on a 5/8" X 2 1/2" steel shank for permanent attachment in grout filled masonry block or concrete. It can be wall or floor mounted.

- 651 Door Stop - 2" dia, 1 1/2" tall also available

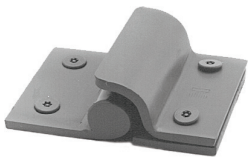


INSTITUTIONAL MORTISE HINGE WITH SECURITY STUD 604 FMCS

Made from investment cast 304 stainless steel. Hinge is 4 1/2" X 4 1/2" X 3/16" thick, with hospital tip and maintenance-free bearing assemblies.

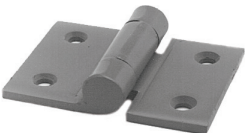
AVAILABLE OPTIONS:

- 604FMC - without security stud
- 604FMC-CE - with concealed through wire for electric applications (not load-bearing)



FOOD PASS HINGE WITH STOP 603FP

This surface mounted hinge is used on food pass doors. Hinge is provided with a stop that restricts hinge rotation to 90 degrees, allowing the food pass door to act as a shelf. Hinge is 3" X 4" X .210" thick steel, with a fully welded pin.



PRISON HINGE 603

This hinge can be used for many prison applications, including access panels and weapons lockers. Hinge is 3" X 4" X .210" thick steel with a fully welded pin.



MOGUL CYLINDER

This high security 6 pin tumbler mogul cylinder provides more key combinations than standard five tumbler models. This feature, combined with the sheer physical size of the Airteq cylinder, provides the user with the highest security uni-axial mogul cylinder available.

- ASSA high security mogul & mortise cylinders also available.



PULL HANDLE 612

Investment cast, stainless steel, US32D. Overall length is 8 3/4". Projection is 2 3/16".



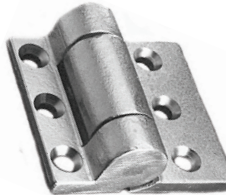
KNOB PULL 613

Stainless steel, US32D. The diameter at the base is 3 1/4". Projection is 2 1/4" and knob diameter is 2 1/4".



FLUSH PULL 614

Investment cast, stainless steel, US32D. The size of the face plate is 4" X 5" X 1/8".



PRISON HINGE 605

This heavy duty surface mounted hinge is designed for use with the heaviest of doors. Hinge is 5" X 6" X 1/2" thick cold rolled steel. This 800 lb. capacity hinge features self-lubricating radial and thrust bearings for ease of operation in high use areas and a hardened alloy steel pin for added security.

- Full surface, full mortise, half mortise, and gap applications available.



INMATE PUSHBUTTON 6300

This heavy duty switch assembly is designed specifically for the detention environment. When enabled from a control station, it will allow inmate operation of cell door locks or can perform as an inmate call button. This momentary switch assembly can be used in either 24VDC or 125VAC applications. Stainless steel.

For complete information on any Airteq product, call 1-800-466-3007 or visit airteq.com